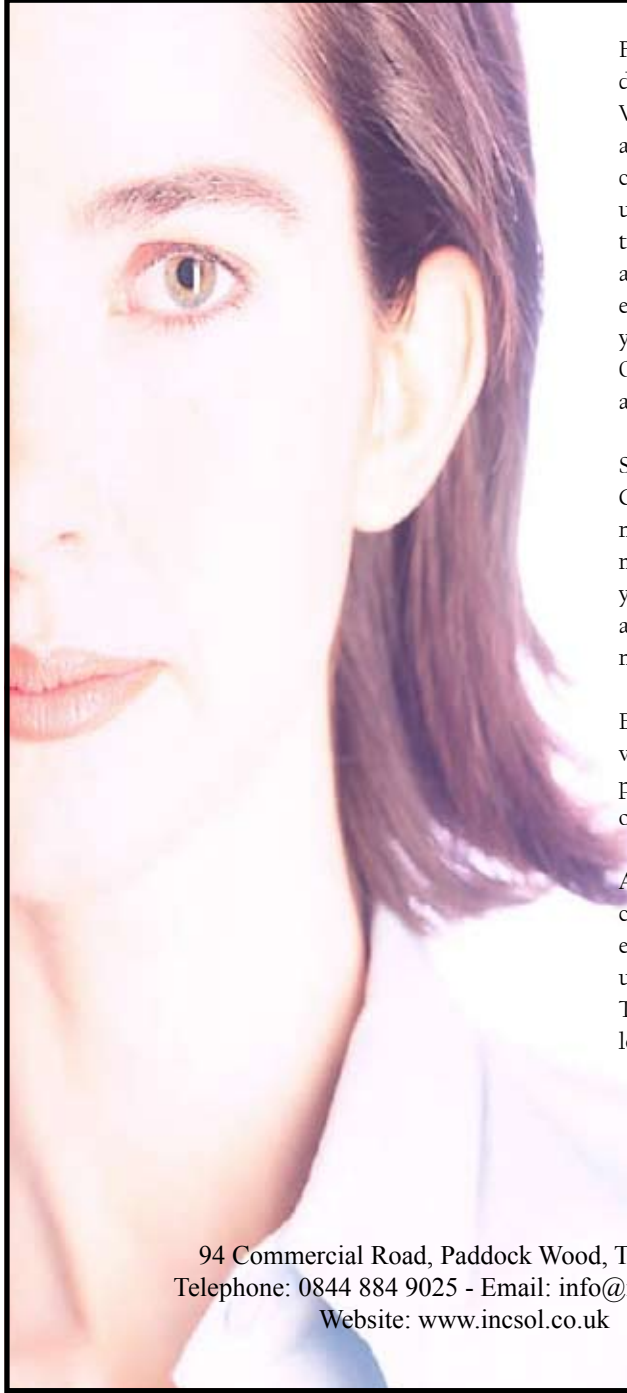




WEBSITE DESIGN



From a simple web presence to an ecommerce site, we will develop your website to suit your business needs.

We understand that every business requires an individual approach, so every website we develop is bespoke to you the customer. Before we start on the design of a website we try to understand your business needs, this means your website can be tailored specifically to suit your corporate image and business activities. If have an existing website we provide redesign/enhancement services, or we can simply update and maintain your site to meet your requirements.

Our graphics team will ensure that your website looks as good as it functions.

Sites can be driven from a back-end database, known as a Content Management System (CMS). A CMS can allow your new product range, latest news and images to be online within minutes. You can decide what you want online, and when you want it published. Your website can also be fed from any accessible database, and so ties in with your data warehousing needs.

Ecommerce can simply be purchasing a single product to a vast database driven online catalogue, with secure transaction processing. All our websites are fully expandible so can change or grow as your business needs change.

After the design and implementation of your new website we can also help advertise your site online, ensure efficient search engine optimization and submission and continue with site updates as required.

To complement your site we can also provide digital photography, logo design and banner ad design.

94 Commercial Road, Paddock Wood, TN12 6DP
Telephone: 0844 884 9025 - Email: info@incsol.co.uk
Website: www.incsol.co.uk



INCORPORATE
SOLUTIONS